

## CASE REPORT

### BONECARE TSA ON 4 IMPLANTS IN LOWER JAW

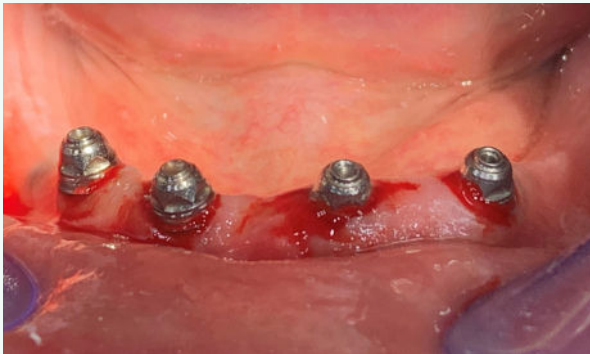
**4 Bonecare TSA (Titanium Shock Absorber) on Southern Implants Deep Conical 3.5/4.0 in the lower jaw with a titanium Intellident Hybrid Bar and a bridgework in G-Cam.**

The patient is rehabilitated in the maxilla with a full-arch ceramic bridge supported by four implants. For the mandible, Dr. Patrick Ordies selected Bonecare TSA abutments due to their shock-absorbing properties, which help reduce occlusal stress and enhance patient comfort.

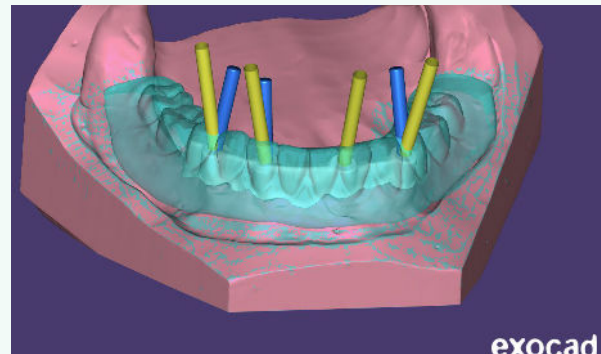
A primary titanium Intellident Hybrid Bar was fabricated to serve as a stable foundation. This rigid framework supports a secondary prosthesis made from G-Cam, a high-performance, nano-reinforced composite material known for its strength, lightweight properties, and biomechanical resilience. The secondary structure was digitally designed, milled, and individualized by MDL-Euregio dental laboratory, ensuring high precision and customization. The combination of TSA abutments, the titanium bar, and the G-Cam prosthesis results in a dynamic, durable, and patient-centered restorative solution.

**Dentist Patrick Ordies**  
Lanaken, Belgium

**Dental Laboratory MDL-Euregio**  
Maasmechelen, Belgium



**01** Placement of TSA abutments after removal of the healing abutments. For the analogue impression, dentist Ordies used TSA open tray impression copings.



**02** Design Intellident Hybrid Bar with angulated screw channels (blue). A core file of the bar is provided to dental laboratory MDL-Euregio.



**03** Based on the core file, the dental lab made a try-in bridge.



**04** The Intellident Hybrid Bar is anodised for a higher esthetic result.

# PROSCAN INTELLIDENT



**05** Try-in with straight screw channels. During this phase the occlusion is checked for optimal end result.



**06** Definitive bridge in G-Cam glued on the Intellident Hybrid Bar with angulated screw channels.



**07** Final result



TSA Driver



TSA Open Tray  
Impression Coping



Intellident Hybrid Bar

**BONECARE**  
TITANIUM SHOCK ABSORBER

